

Environ— mental Insight



This book is all about our ethics – about the potential environmental impact of our business and about what the Senator Group of companies is undertaking to minimise it. No ifs. No buts. No maybes. This book is all about now – about what we are already implementing to improve the environment. Today. Not just for our future, but everybody's future.

Inside you'll find information about our innovative approach to Sustainability, waste-management and carbon emissions; as well as our impressive environmental credentials, certificates and accreditations.

Our actions speak much louder than words.

“...A man's ethical behaviour should be based on sympathy, education, and social ties.”

— Albert Einstein

We couldn't agree more...



— Reduce
— Reuse
— Recycle

Protecting the environment. It's in our very nature.

Everything revolves around Sustainability. And our day-to-day business revolves around our two purpose-built Recycling Centres and the way Senator encourages everyone we deal with to Reduce, Reuse and Recycle. Our employees have identified 32 waste streams in our business.

We have been awarded the ISO 14001 Environmental Standard, which aims to reduce any and all negative impacts on the environment. We are members of FISP (Furniture Industry Sustainability Programme) and are helping drive the whole industry forward in this sector.

It's in our very nature

Senator's environmental policy is woven into the very fabric – the DNA, if you like – of our business. From the factory floor to head office, our personnel in transport, manufacturing, procurement and sales – they all help us to save the world, all day and every day.

All our customers and suppliers are encouraged to do their bit and join us in the crusade.

It's only natural

And because we understand that Nature is an ever-changing cyclical process, we see our environmental strategy as an ongoing, evolutionary journey – a sequence of departures and returns that adapt and improve on each and every cycle.

And just like Nature, the results of this process are often spectacular...

Sustainability

Senator is committed to continually improving the sustainability of all environmental aspects within our business.

To meet both international standards and our own environmental targets we apply the three R's principle, **Reduce, Reuse** and **Recycle**.

Whilst recycling is the element which receives the most exposure it is actually the last option available and should never be the prime target in the battle to Reduce waste.

It is our duty as individuals and as a company to initially attempt to Reduce usage. Then we should look to Reuse wherever possible and finally, only after these two processes have been exhausted, should we consider Recycling.



Our credentials, certificates, awards

Description	Accreditation	Certified
Quality System	ISO 9001	Certified 1991
Environmental Standard	ISO 14001	Certified 2001
Chain of Custody	PEFC	Certified 2003
Chain of Custody	FSC	Certified 2003
Sustainability	FISP	Certified 2006

ISO 14001 Environmental Standard
This aims to reduce any and all negative impacts in the environment and we can demonstrate our performance since 2001.

FISP (Furniture Industry Sustainability Programme)
Awarded by the FIRA, this sustainability certificate is designed to monitor all sustainability aspects of a company's facilities and operations. Senator achieved one of the first sustainability certifications within the office furniture industry – a public declaration of our commitment to improving our performance in every possible way.



Waste not, want not

Take a dip in the cleanest streams around Waste Streams. They might sound like part of a sewer, but waste streams are actually the purest streams there are. And there's more than 32 of them flowing throughout the Senator landscape.

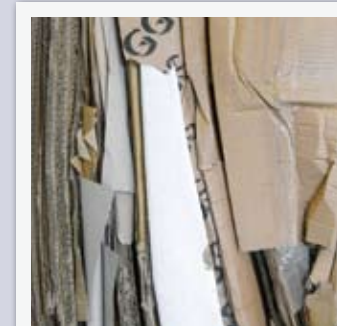
We are always looking to identify new sources of waste within our business. When we do – like oil prospectors – we immediately tap them. This way we can control and channel or even stem the flow of the stream.

By sorting and segregating our internal and external waste we re-use where possible, to minimise what would potentially be put into landfill.

Here are just some of the waste streams currently in operation across our sites:

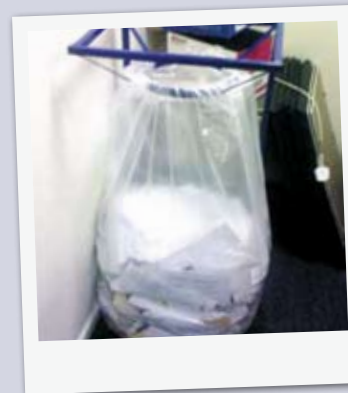
Cardboard

This is used to line the sides of the trailers as one of the methods to protect products on transit. Cardboard corners from packaging are also re-used where possible. Waste cardboard is bailed and sent for recycling.



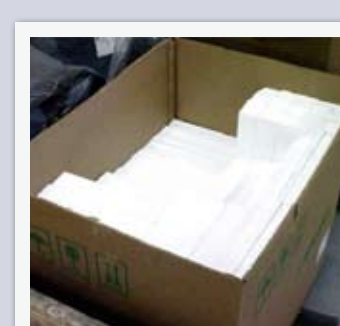
Office paper

We encourage employees not to print out documents unless absolutely necessary, then use both sides of the paper. To use email as the preferred option of communication. All waste paper is collected in designated recycling bins located around our offices.



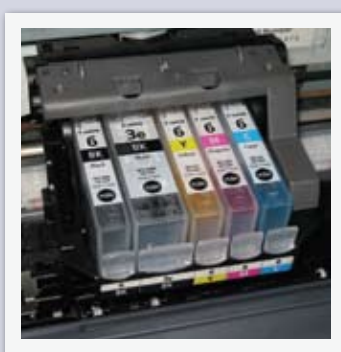
Polystyrene Packaging

Good condition polystyrene, corner and fitting pieces are re-used and bad condition polystyrene is recycled. We ensure that our installation teams keep polystyrene in good condition so that more and more can be re-used.



Printer Ink cartridges

These are collected at several points across all of our sites and then sent to a company who re-fill cartridges for re-sale. The revenue generated is given to a local charity.



Aluminium

All waste aluminium is segregated from other metals and sent to specialist reprocessors to be recycled.

Steel

All waste steel is segregated and sent to be recycled.

Hide

An automated CAD/CAM cutting machine was procured to maximise hide usage and waste minimisation. Figures indicate a saving on this commodity of at least 8%. All cut hide is recycled and reprocessed into shoes and palm surfaces for working gloves.

Fabric

An automated CAD/CAM machine, similar to our hide cutting machine, was procured for our fabric cutting process to minimise waste.

Off-cut fabric is also recycled and turned into packing blankets, carpet underlay and bedding fillings. The cardboard tubes are sent back to the manufacturer to be re-used.

**Melamine Faced Chipboard/
Medium Density Fibreboard**

Waste minimisation programs are incorporated in our production processes when cutting raw board. The new robotic handling facility minimises board cutting waste, and utilises large off-cuts in a more waste efficient manner.

Wood dust

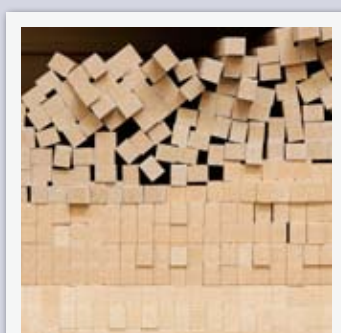
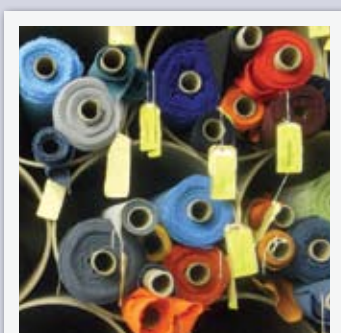
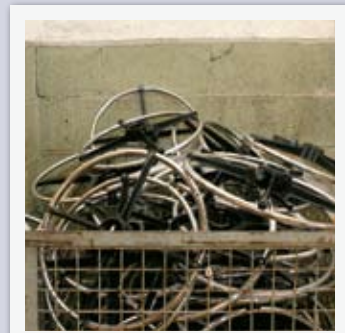
The machine shop extraction system removes wood dust from machines and the shop floor. This is sent directly into our boiler to feed the heating system, which services the factory and offices.

Polythene Edging

Novafoam edge protection is returned from customers. Longer sections are returned to our desking facility for re-use on packing smaller items.

Engine oil / Mineral oils

Used engine oil from services is collected and used to heat the garage in the winter months.



The background of the entire page is a close-up photograph of a blue-painted metal surface, likely a door or a wall. The paint is heavily worn, with large areas of rust and peeling, revealing a brownish-orange metal underneath. In the center, the word "ONLY" is spray-painted in a bright yellow, blocky font. The letters are slightly blurred and have a soft, glowing effect. There are some small, rectangular pieces of white material, possibly tape or debris, on the surface.

In 2007 we
recycled over
600 tonnes
of waste.

We can do
better than
that though....

Where the stream meets the river

Recycling and the ocean of possibility...

As in Nature, our waste streams eventually have to come out somewhere. Having flowed down from our offices and factories, our waste streams enter a river-mouth:- our own purpose built recycling plants – Senator Recycling.

Senator Recycling is made up of two separate facilities – Recycling-1 and Recycling-2. Broadly speaking, Recycling-1 processes all of our internal waste through a number of Waste Stream Management channels, whilst Recycling-2 deals with our furniture reprocessing operation.

We believe Senator Recycling is the industry's first dedicated recycling operation and we're enormously proud and excited about the possibilities this affords the environment.

A small price to pay How much this costs

Inevitably, there is a cost involved in our recycling operation. This covers separation, recycling and disposal of components in our furniture.

There is also a small administration fee for collections/deliveries and a charge to cover the stripping out of furniture from your office. This cost will vary due to a number of factors, e.g. location, type of building and access time.

Our "Return to Base" cost can be obtained from Senator.

Senator will provide certification to prove that furniture has been recycled in the correct manner. Certification is obtained from Senator and monitored by the Environment Agency.

Recycling-1 - Waste Stream Management

What goes in

- All of our internal waste streams
- Customer's waste packaging

In 1997 the Producer Responsibility Obligations Regulation came into force. This was intended to increase the quantities of recovered and recycled waste packaging.

Senator seized upon the opportunity by encouraging our customers to return their packaging to us for recycling.

Once a customer signs up to this scheme, we provide them with their own Senator bags. Our customers sort and flatten the waste from their furniture installation and we arrange to collect the filled bags on the next van.

At the end of every year, individual customers are advised of the total tonnage of packaging recycled on their behalf.

Recycling-2 - Furniture Reprocessing

What goes in

- Chairs
- Desks/Tops
- Pedestals
- Storage
- Screens
- Metal Furniture

Recycling-1 well and truly opened up the floodgates on our waste streams. If we could recycle packaging, why not recycle our furniture? So Recycling-2 was born.

Recycling-2 is a state of the art facility, purpose built for "end of life" disposal. That is to say "old for new". As customers order new furniture, we collect and re-process their old furniture. This scheme is audited by the Environment Agency.

Wherever possible, we endeavour to donate any good furniture to local charities and organisations.

What happens

1. Wood

As well as being "hogged" and used through the wood-burning furnace to heat our factories. Excess wood is diverted to a Biomass Power station to generate electricity.

2. Aluminium

After being separated, Aluminium is sent to a specialist recycler where it is melted down, re-moulded and stored in blocks.

3. Steel

Similarly, Steel is sorted, melted down and stored for a variety of purposes.

4. Polypropylene

This is recycled by shredding and crumbing into pellet form.

5. Foam

Once brought back to us, foam is bailed and sent back to foam recyclers to manufacture reconstituted foam.

6. Fabric

Fabric is recycled by a giant shredding machine which breaks the fabric down into individual fibres.

What comes out

1. Wood

Recycled wood can be used in many applications such as to line racecourses or even animal bedding. Some even goes into manufacturing more MFC.

2. Aluminium

Aluminium can be recycled again and again. Often it is sent to mills to be rolled out into aluminium foil or for drinks cans.

3. Steel

Like Aluminium the good thing about steel is that it can be infinitely recycled. Virtually all Steel product has a percentage of recycled Steel.

4. Polypropylene

This can be re-processed to make food trays such as the ones used in fast-food outlets.

5. Foam

Reconstituted foam is used in school gym mats and packaging for heavy plant equipment.

6. Fabric

Repossessed fibres are turned into items such as carpet underlay.



All Senator environmental initiatives are approved and regularly monitored by the Environment Agency.

Full of goodness

Here is an example of the recycled content* and recyclability** of some of our desking and seating components.

Summary of typical Desking models

model	recycled content	recyclability
Fairway Desk	42.88%	99.64%
Intrigue Desk	44.37%	98.97%
Play Desk	42.65%	98.99%
Flight Table	45.73%	98.14%
Axis Table	45.52%	99.25%

Summary of typical Seating models

model	recycled content	recyclability
Aura fully upholstered	58.46%	99.26%
Enigma multifunction with arms	31.34%	78.84%
Rhapsody cantilever	26.79%	100.00%
Rhapsody high back	40.85%	97.28%
Trillipse fully upholstered armchair with castors	58.46%	99.25%

*Recycled content is the percentage of weight of the recycled material which has been used in the production of all componentry necessary to manufacture a particular item.

**Recyclability is the percentage of weight of the material which can be recycled when the product reaches its "end of life".



Saving the wood for the trees

Our environmental policy works right across our business. At Senator we are always looking at the bigger picture. When we see a wood, we see the trees, the flowers – the whole eco-system.

That is why we have set up our own business eco-system, and it's flourishing right across the Senator landscape.

Energy management

We are constantly striving to reduce energy consumption throughout all of our manufacturing facilities and have developed an Energy Policy and Plan which realises "Energy Champions" for each site.

Our efforts are clearly demonstrated at our facilities in Altham, where for a number of years we have been making use of waste product in an effective manner. Through the installation of a wood burning furnace, we are able to burn wood waste from the manufacture of Desking. Saw dust and off-cuts are burnt in the furnace 24 hours a day and the energy generated is used to heat the entire facility and hot water system. Not only has this saved on sending off-cuts to landfill, but has drastically reduced the use of fossil fuels.



Green buildings

Wherever possible we strive to make our workspace green. Our new state of the art showroom in London is powered by green energy sources.

We've installed thermal glazing in our office windows and use innovative, energy efficient lighting systems in all of our buildings – reducing costs and energy consumption.

We encourage all of our staff to adopt eco-friendly practices, such as switching off all unwanted lights and electrical equipment left on standby, or making use of our paper and aluminium can recycle bins.



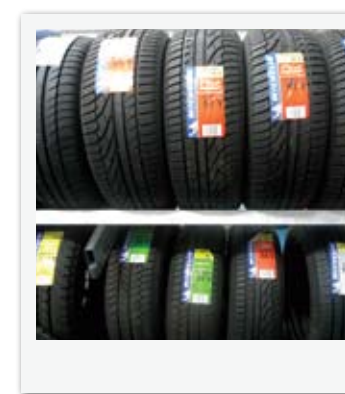
Transport management

Senator has a dedicated Logistics department, including its own garage, both of which strive to improve the impact Senator make on the environment.

We only ever purchase fuel-efficient vehicles. Most of our fleet are fitted with Euro 5 engines. These help to lower CO2 and Nitrogen Oxide emissions.

We prevent pollution through ISO 14001 Environmental Management Systems, whilst our garage facility is heated via recycled oil.

We even promote the use of car-sharing schemes.

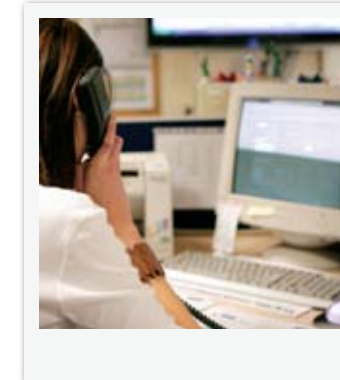


Procurement policy

We aim to produce goods and services of the highest standards, and whilst price is always critical, we also consider other factors in the purchasing decision process. These include:

- Whole Life Cost
- Assured Supply
- Absolute Quality of Product and Service
- Continuous Improvement and Value Engineering
- Flexibility of Production and Service
- Standards Accreditations (eg. Quality Assurance, Health and Safety, Environment and Sustainability policies.)

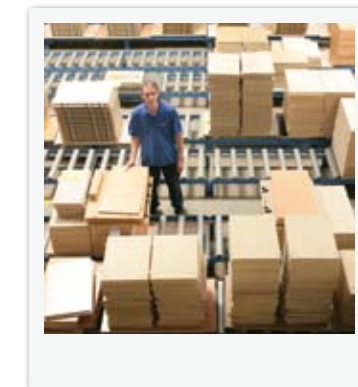
Suppliers are reviewed on an annual basis to ensure they meet our necessary requirements.



Sustainable timber purchase

Senator only procures MFC, MDF and chipboard from suppliers which are certified as using timber from sustainable sources.

All products purchased through suppliers are expected to have a Chain of Custody number, which approves the products as being to the standard and sources we require.



Air emission management

Senator implements procedures to combat any pollution emitted into the atmosphere during any of our production processes.

Stringent measures are in place to ensure that the atmosphere is not polluted as a consequence of our wood burning boilers. Regular tests are carried out to ensure that pollutants such as Carbon Monoxide and Hydro-Carbons are within the permitted boundaries. These tests are carried out annually by a certified independent body, and we have consistently met and surpassed their required targets.



Following carbon footprints

The story so far

Our latest environmental journey has been monitoring Senator's carbon (CO₂) footprint*. With an inextricable link to global warming, carbon (CO₂) emissions are currently the biggest threat to environmental welfare, and we've successfully followed our carbon footprints right back to their source.

By measuring specifics like the power used at our manufacturing sites and the diesel used to distribute all of Senator's products, a simple mathematical equation tells us, for example, the carbon footprint for delivering a typical Senator chair or desk.

Now we have got the base line figures, we can utilise everything from design amendments to our Continuous Improvement Policies and Energy Initiatives to drive down our carbon emissions as much as we possibly can.

- In 2007 approx 600 tonnes of waste was diverted from landfill as a result of our recycling initiatives.
- A significant amount of money was saved in landfill tax during 2007. This was a direct result of our waste stream policy.
- Over 18 months the percentage of waste recycled went up from 46% to a staggering 75% (Jan 2006 – July 2007).
- More than 950,000 kwh of electricity and 410 tonnes of CO₂ were saved after our energy saving initiatives were implemented.
- A dedicated 'green team' has been established creating an increasing number of jobs throughout the business.
- Senator was awarded the Lancashire Business Environmental Associates 2007 award for Waste Minimisation and Environmental Management.

*The Carbon Trust define a "carbon footprint" as 'The total amount of CO₂ and other greenhouse gas (GHG) emissions for which an individual or organisation is responsible'

What the future holds— our journey continues

What was it Einstein said again? – “Ethical behaviour should be based on sympathy, education and social ties.” I hope we’ve proved him right.

Whilst we might not be rocket scientists or even quantum physicists, we think we understand the world pretty well. This is why the systems, processes and operations highlighted in this book are all working incredibly successfully. However, this is just a tantalising glimpse of how effective and ‘green’ our business will be.

Senator’s environmental journey has only just begun. Only through the continual help and support of our staff and customers can we achieve our goals – even lower carbon emissions, even more recycling and even less environmental impact. Who knows – maybe one day we’ll be the first company to achieve 100% effective sustainability?

It is impossible to underestimate the importance of these issues to our organisation. It isn’t just the future of our business. It’s the future of our world.

Colin Mustoe
Chairman & Founder

Senator International
Altham Business Park
Accrington
Lancashire
BB5 5YE
T +44 [0]1282 725000
F +44 [0]1282 725039

London Showroom
11-13 Melton Street
London
NW1 2EA
T +44 [0]207 388 7621
F +44 [0]207 388 3121

Senator b.v.
Showroom
Huis ter Heideweg 58-1
3705 LZ ZEIST (NL)
T +030 698 1030
F +030 698 1039

US
Allermuir
1630 Holland Road
Maumee
Ohio 43537
USA
T +00 [1]419 887 5806
F +00 [1]419 887 5805

Senator International Ltd
sales@senator.co.uk
www.senator.co.uk